



# SIH Cardiovascular Services

March 7, 2024



# Cardiovascular Services

- Treatment of heart and blood vessel diseases
- Includes
  - **Medical management**
  - **Non-Invasive Cardiology**
  - **Invasive Cardiology**
  - **Heart Failure management**
  - **Administration**



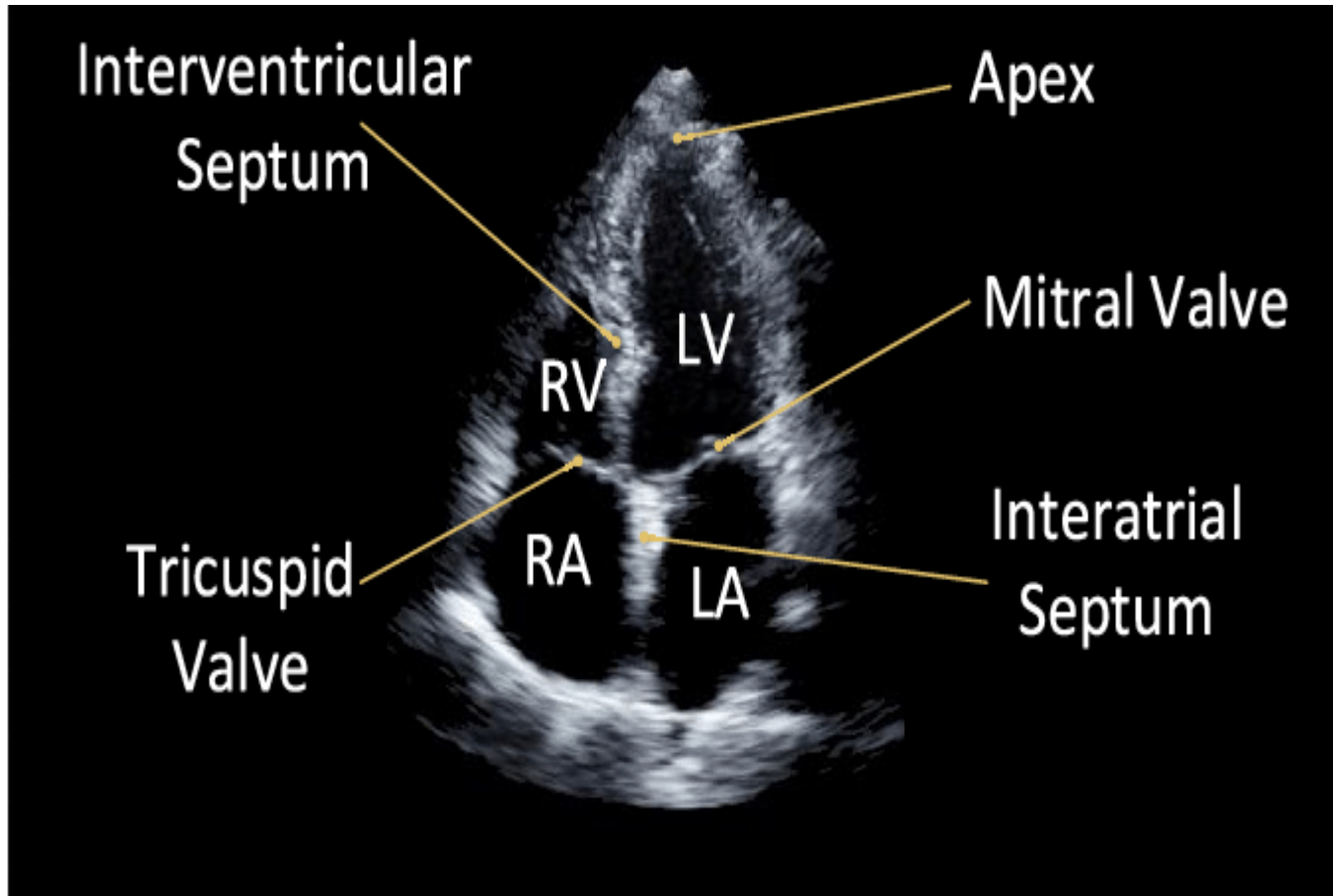
# Medical Management

- Cardiology offices/clinics
  - **Care provided by: Physicians, Advanced Practice Providers (APPs - Nurse Practitioners, Physician Assistants), RNs, LPNs, Medical Assistants**
  - **Manage patient's acute and chronic cardiovascular diseases**
  - **Coordinates care with the patient's primary care provider (PCP)**
  - **Ensures safe follow up from hospital stays**
- Acute Care (Hospital) management
  - **Care provided by: Physicians, APPs, RNs, Patient Care Technicians (PCTs), Unit Coordinators**
  - **Manage acute cardiovascular needs (Heart Attacks, Heart Failure, Heart Rhythm issues, etc)**

# Non-Invasive Cardiology

- Inpatient and Outpatient cardiac testing
  - **Inpatient – Hospital; Outpatient – Come in for test only**
  - **Performed by Cardiac sonographers, Cardiovascular Technicians, Radiologic Technologists**
  - **Herrin Hospital and Memorial Hospital of Carbondale have cardiac testing departments and teams**
  - **Cardiologist or Radiologist interpret the images and results of tests**
- Cardiac rhythm monitors
  - **Worn by patient to continuously detect changes in heart rhythms**
  - **Data is sent to server**
  - **If life-threatening event, patient is notified to seek emergent care immediately**

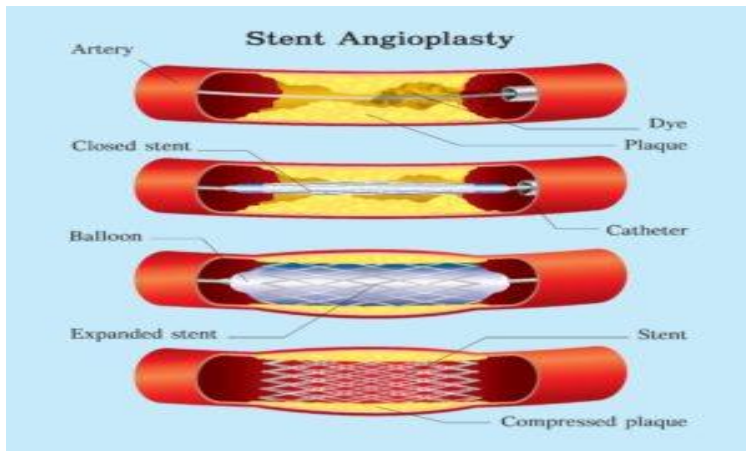
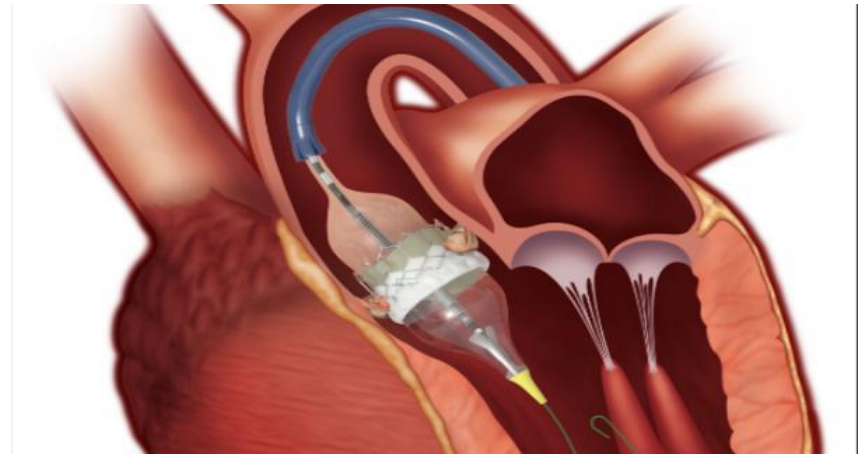
# Non-Invasive Cardiology cont.



# Invasive Cardiology

- Cardiac Cath Lab
  - **Care provided by Cardiologists, Electrophysiologists, Vascular Surgeons, RNs, Anesthesiologists, CRNAs, and Special Procedures Technologists**
  - **Diagnose and fix blockages in coronary arteries and other veins and arteries in the body**
  - **Also correct structural issues in the heart, such as heart valves and areas prone to clotting**
- Cardiac Clinical Decision Unit
  - **Care provided by RNs and Patient Care Technicians (PCTs)**
  - **Prepare patients for their cardiac cath procedure and recover them after**
- Cardiovascular Operating Room/Hybrid Room
  - **Care provided by Cardiac Surgeons, Vascular Surgeons, Anesthesiologists, CRNAs, APPs, Perfusionists, RNs, and Surgical Technicians.**
  - **Perform open heart surgeries and vascular surgeries in an OR setting**

# Invasive Cardiology cont.

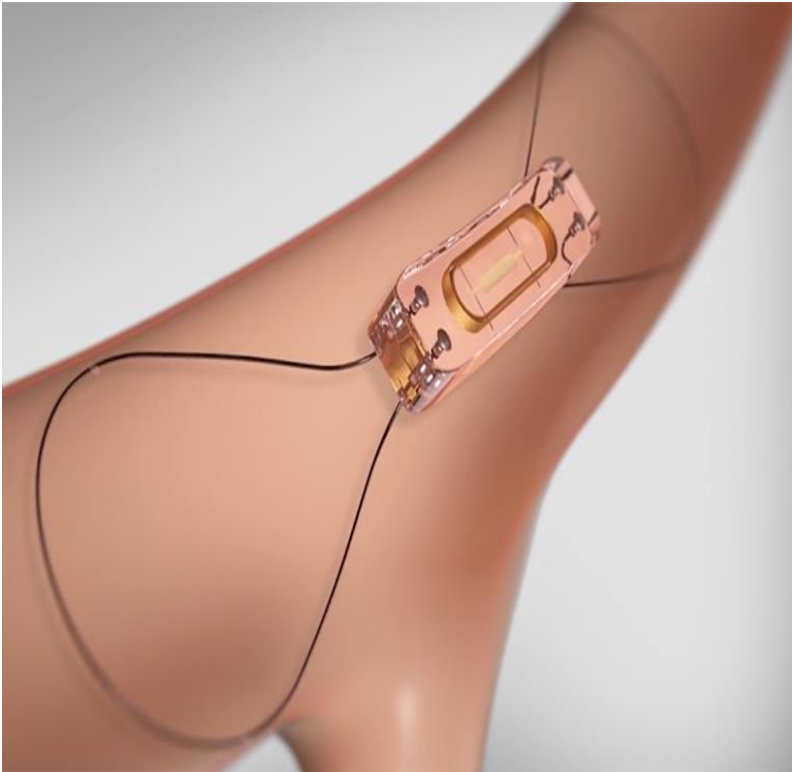


# Heart Failure Management

- Cardiac Management Center
  - **Care provided by APPs, RNs, LPN, and Office Coordinator**
  - **Help patients manage the symptoms of heart failure and help prevent them from having to be hospitalized**
  - **Also provides treatment in the clinic, such as IV medications to eliminate extra water in the body**
- Heart Failure Navigation
  - **Oversees the care of patients with heart failure in the hospitals**
  - **Ensures appropriate treatments are being ordered and carried out**
  - **Coordinates the transition of the patient from the hospital to home to their follow up appointments**
- Heart Failure device and program management
  - **Oversight of heart failure detection devices and programs (such as our Scale Program)**



# Heart Failure Management cont.

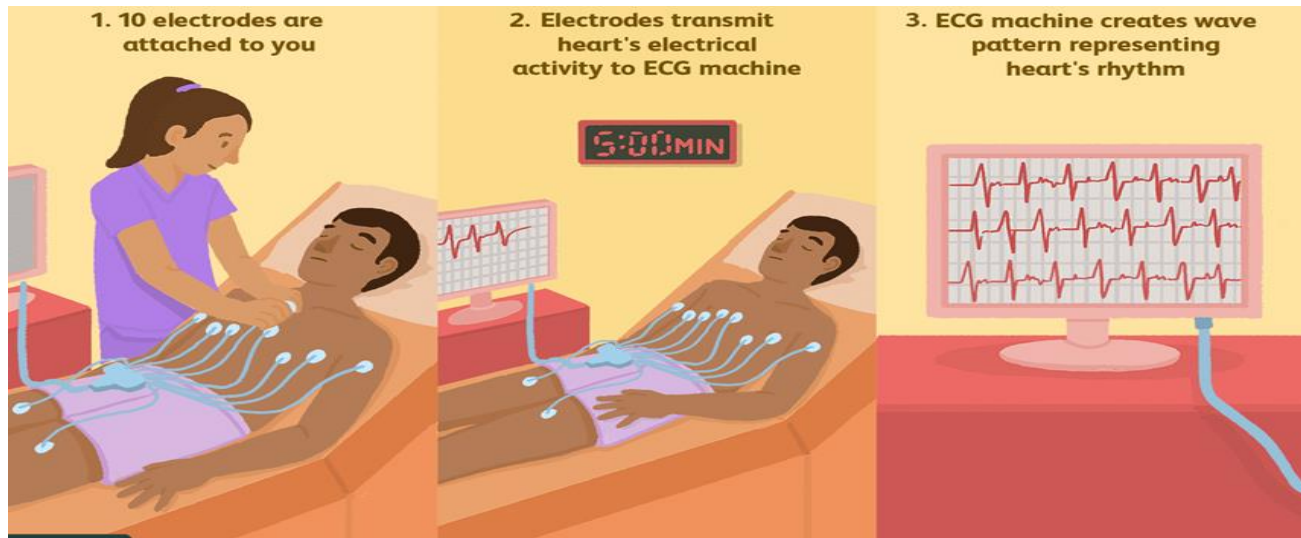


# Administration and Support

- Management/Directors
  - **Department managers – Supports the departments and oversight of clinical/business aspects**
  - **Practice managers – Supports the physician practices and provides oversight of clinical/business aspects**
  - **Director – Sets strategy for service line, supports clinical needs, and oversight of business aspects of service line**
- Education
  - **Cardiac Educator – Oversees education and training of RNs within service line**
  - **Clinical Resource Coordinator – Plans Cath Lab cases and oversight of education/training of special procedures technologists**
- Quality
  - **Abstractors - Audits and interprets documentation to ensure quality standards**
  - **Coordinators – Coordinate programs such as STEMI/STAT Heart and Structural Heart**

# Cardiovascular Technician

- \$17.00/hr - \$23.80/hr
- Minimum education – High school diploma and on-the-job training
- Performs EKGs, Supports Stress Tests, and Places Heart Monitors



# Cardiac Sonographer

- \$30.95/hr - \$46.43/hr
- Minimum education – Associates Degree in Sonography
- Performs ultrasound imaging of the heart and supporting structures



# Vascular Sonography

- \$30.95/hr - \$46.43/hr
- Minimum education – Associates Degree in Sonography
- Performs ultrasound imaging of blood vessels throughout the entire body



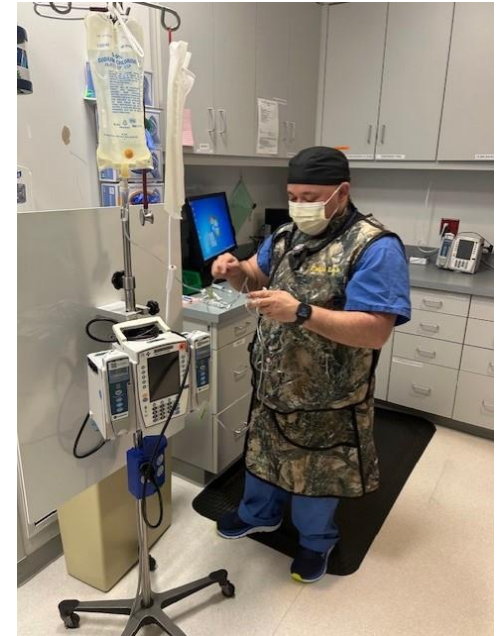
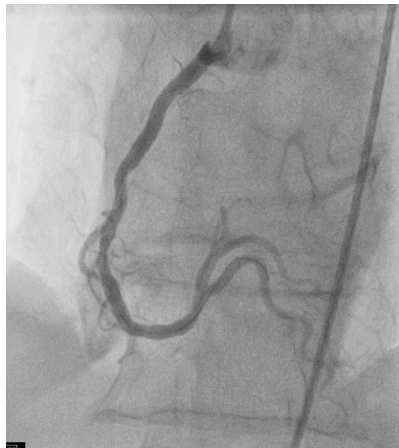
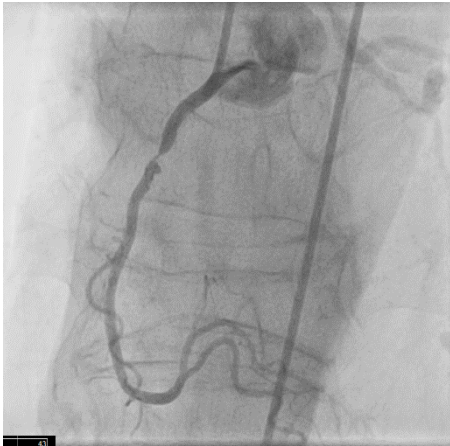
# Stress Testing and Procedures RN

- \$29.36/hr - \$46.12/hr
- Minimum education – Associates Degree in Nursing
- Supervises and performs stress testing and supports cardiac procedures



# Cath Lab RN

- \$29.36/hr - \$46.33/hr
- Minimum education – Associates Degree in Nursing
- Oversees the care of the patient during procedure



# Cath Lab Special Procedures Technologist

- \$29.36/hr - \$46.33/hr
- Minimum education – Associates degree in Radiology Technology
- Assists cardiologist with procedure and manages the x-ray machine during



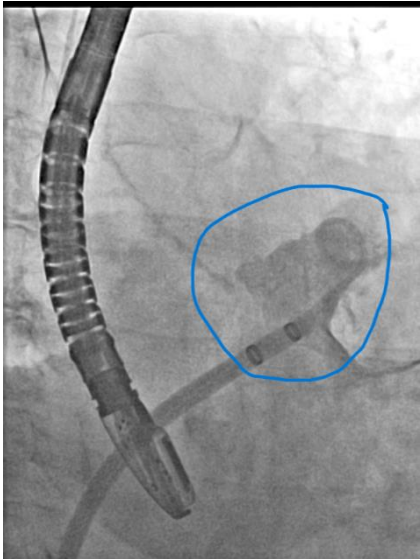


# Cath Lab Prep and Recovery RN and PCT

- RN
  - \$29.36/hr - \$46.12/hr
  - Minimum education – Associates Degree in Nursing
  - Prepares patient for procedure, administers medications, assess patient for unforeseen issues that may impede their procedure
  - Recovers patient after cath procedure, administers medications, assesses access site and other physical responses to the procedure, ensures safe discharge home
- PCT
  - \$17.34/hr - \$26.01/hr
  - High school diploma and Certified Nurse Assistant (CNA) certificate
  - Assists RNs to prepare the patient for their procedure and recovery after

# Collaboration and Teamwork

Before  
Watchman



After  
Watchman



# So why Healthcare and Why SIH?

- We get to take care of people and do what we can to help them feel better
- Many different paths you can take
- If you want to change what you do, it is relatively easy
- Great benefits right away
- Work will pay for you to go further your education
- SIH continues to do everything we can to care for the health and well-being of the communities we serve

Questions?

# Cardiology Service Line Roles, wage ranges and minimum education

<b><i>Role</i></b>	<b><i>Wage Range</i></b>	<b><i>Minimum Education</i></b>
RN	\$29.36-\$46.33/hr	Associates Degree in Nursing
Special Procedures Technologist	\$29.36-\$46.33/hr	Associates Degree in Radiology Technology
Cardiac Sonographer	\$30.95-\$46.43/hr	Associates Degree in Sonography
Vascular Sonographer	\$30.95-\$46.43/hr	Associates Degree in Sonography
Patient Care Technician	\$17.34-\$26.01/hr	High school diploma and CNA Certificate
Cardiovascular Technician	\$17.00-\$23.80/hr	High school diploma
LPN	\$20.50-30.50/hr	1-year LPN program
Medical Assistant	\$17.00-\$23.80/hr	4-6 month MA program
Office Coordinator	\$16.00-\$25.00/hr	High school diploma